

THE 7th
SENSE OF
SMART
EDUCATION



The future of education is
AI based education.
Introducing India's in-built
**AI enabled Futuristic
Interactive Panels**

THE FOUNDATION OF THE 7TH SENSE



SENSEPRO

In the world of education, we're all familiar with the five senses—sight, hearing, touch, taste, and smell—that form the foundation of our perception. Beyond these fundamental senses, there's the enigmatic sixth sense that often guides our instincts and intuition. But what if we told you there's a seventh sense—an essential faculty that every child needs to flourish in today's ever-evolving world of learning? At Senses, we believe that this seventh sense is the missing piece of the educational puzzle. It's the sense of adaptability, creativity, and innovation—an intuitive understanding of the rapidly changing landscape of knowledge and technology. *As educators, professors, teachers, and principals, you recognize the importance of nurturing this seventh sense in your students. With Senses, you gain the tools and resources to empower the next generation, ensuring they not only embrace change but thrive in it.*

INNOVATIVE. ILLUSTRATIVE. INTERACTIVE: THE SENSES APPROACH

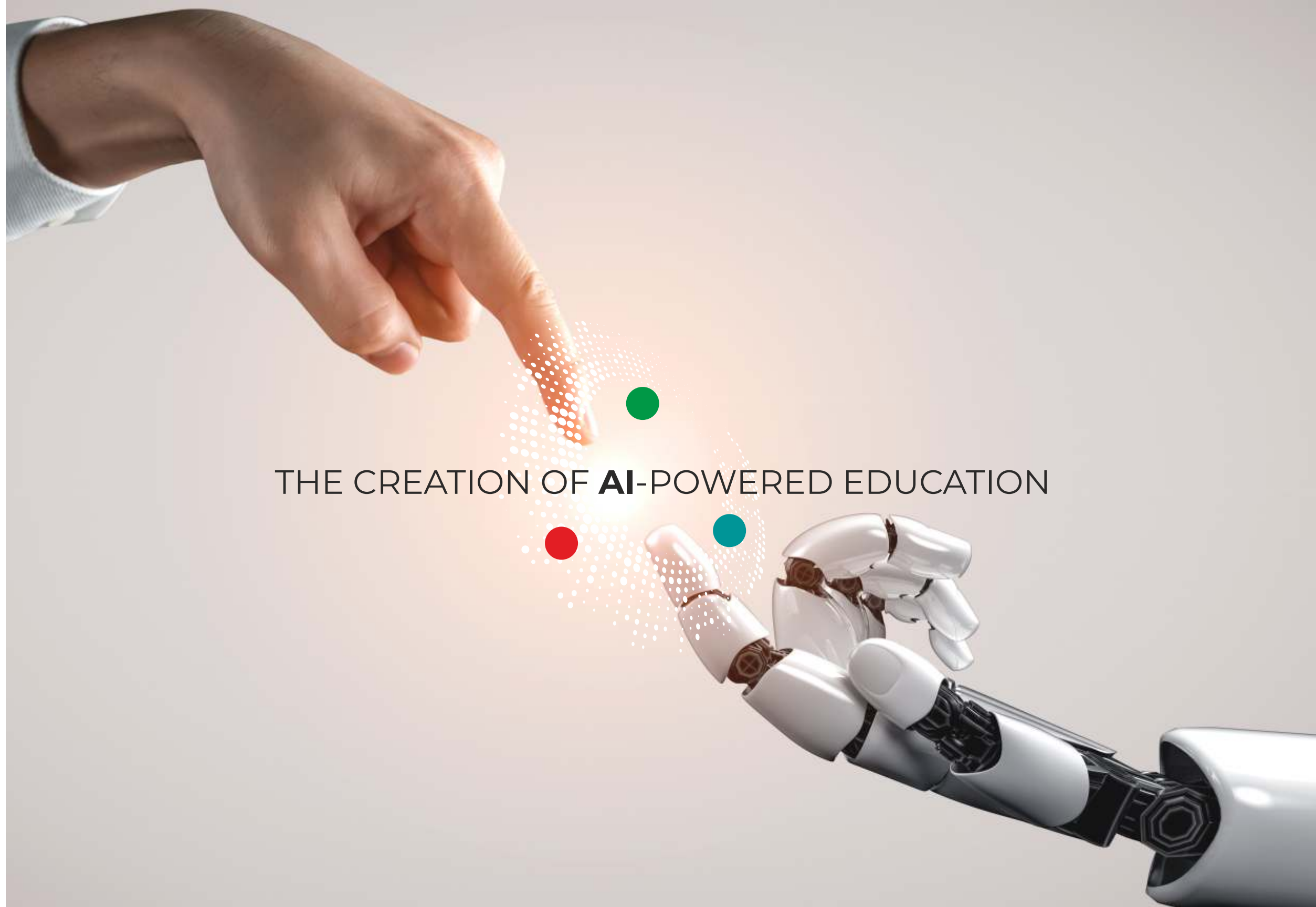


Senses Electronics Pvt. Ltd., established in 2013, is a leading EdTech innovator. Committed to enhancing the classroom experience, we focus on simplifying teaching and learning processes through cutting-edge technology. Our intelligent interactive panels empower educators to write, draw, and annotate with precision using thin pens, maintaining pristine display quality.

- 40,000 PANELS
- 8,000 SCHOOLS
- 70% MARKET SHARE

Our mission is to empower teachers with impactful tools for precise teaching, creating an enjoyable learning environment that fosters student curiosity. We also aim to instill confidence in parents about their child's educational journey.

Committed to exceptional support, we eagerly build lasting partnerships with schools in India. Our goal is to make learning easy, interactive, and fun. Discover how we can unlock the seventh sense of education for your success.



THE CREATION OF **AI**-POWERED EDUCATION



ADAPTIVE & INNOVATIVE AI-POWERED LEARNING

Students can write any topic to auto generate prompts or questions on SenseBoard and use our AI feature to generate answers along with images corresponding to the topic/question asked. These answers can be read aloud or translated as per requirement. Questions can be asked in multiple Indian languages as well.

PRODUCT SPECIFICATIONS

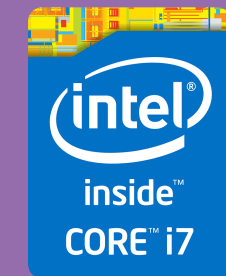
Endless Canvas/
Auto Scroll

61+ multipoint touch
gesture control (AI)

Voice-Enabled
Remote with
in-built
microphone
and pointer

Text/Shape
Recognition With
Measurement

13 Android 13.0*
8GB/128GB RAM



CPU upgrade to
I7 CPU, 11th generation
8GB / 256 GB SSD NVMe
1 TB HDD

The new-age interactive panels work on the latest and unmatched product specifications. This ensures a smooth peerless operation across the board, even for days with long hours.



Powerful 2.1
channel sound
using 2 front facing
speaker & down
firing Bose
Sub-woofer

Energy saving design,
Max 300W, consumes
<0.5W on standby

Wide viewing angle
up-to 178 degree

Windows 11 or Linux Pre loaded

In-built Wi-Fi 6,
Ethernet &
Bluetooth 5.2

Whiteboard
giving sharp, natural
writing experience

NFC Reader

Toughened
glass protection

Open platform, compatible with all e-learning contents

Supports any
pen as small as tip
of a ball pen

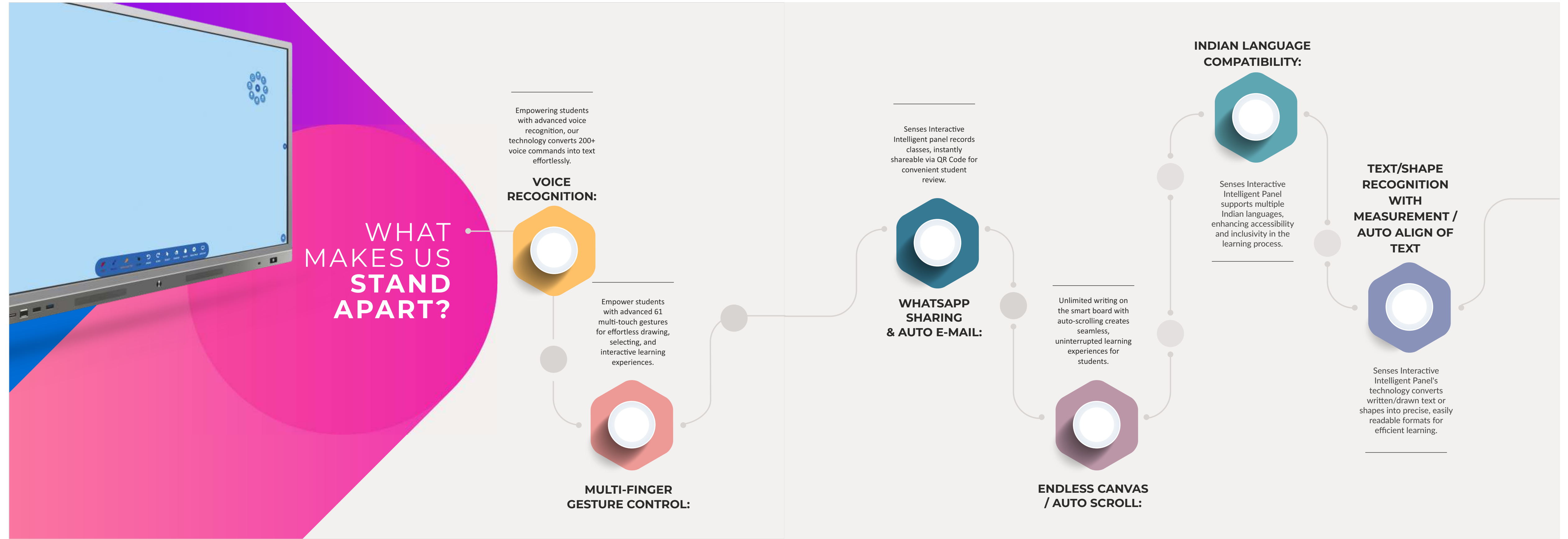
Anti-glare coating
to absorb up to 80% of light

World's thinnest bezel
interactive Panel with complete
metal body

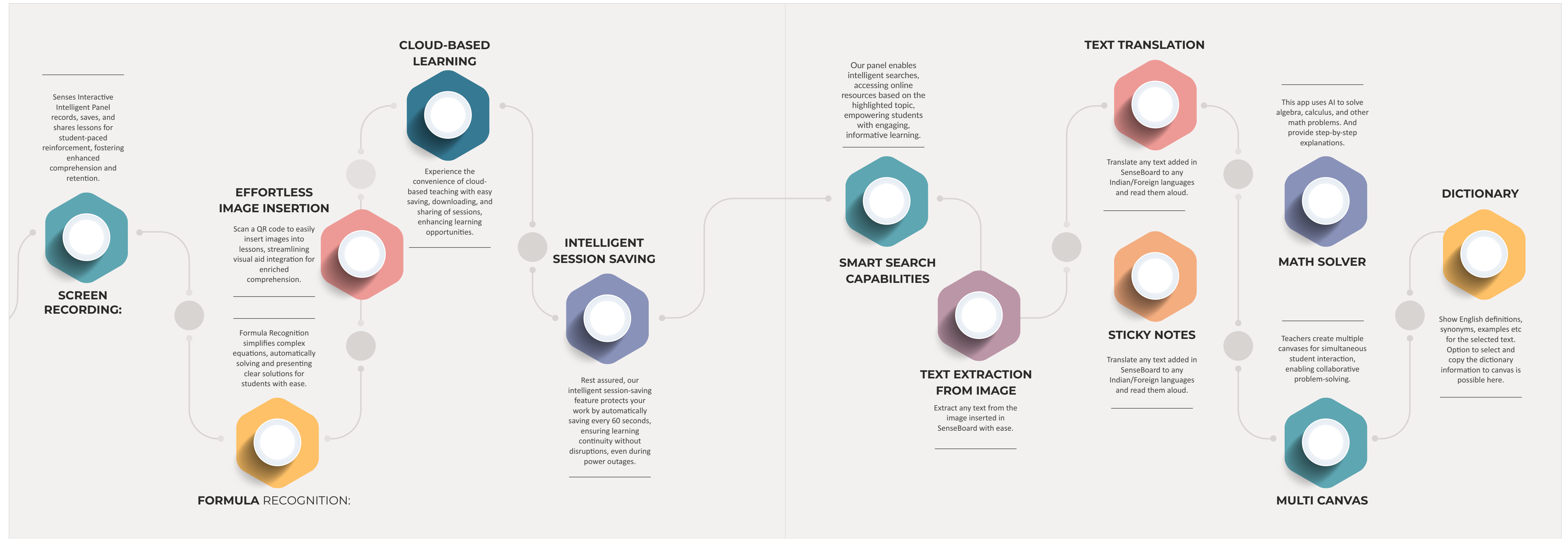
In-built
WiFi access
point

Easy Wireless connectivity
with laptops and mobile devices

NEED ALL ICONS



NEED ALL ICONS



UNLOCKING THE 7TH SENSE WITH 3D INNOVATION

Experience a revolutionary shift in learning with our 3D Models. These models bring conceptual knowledge to life by offering interactive, 360° visualizations of content. Students will be able to grasp complex concepts with unprecedented depth, expanding their understanding through immersive learning experiences.

ENHANCED LEARNING THROUGH 3D IMAGES

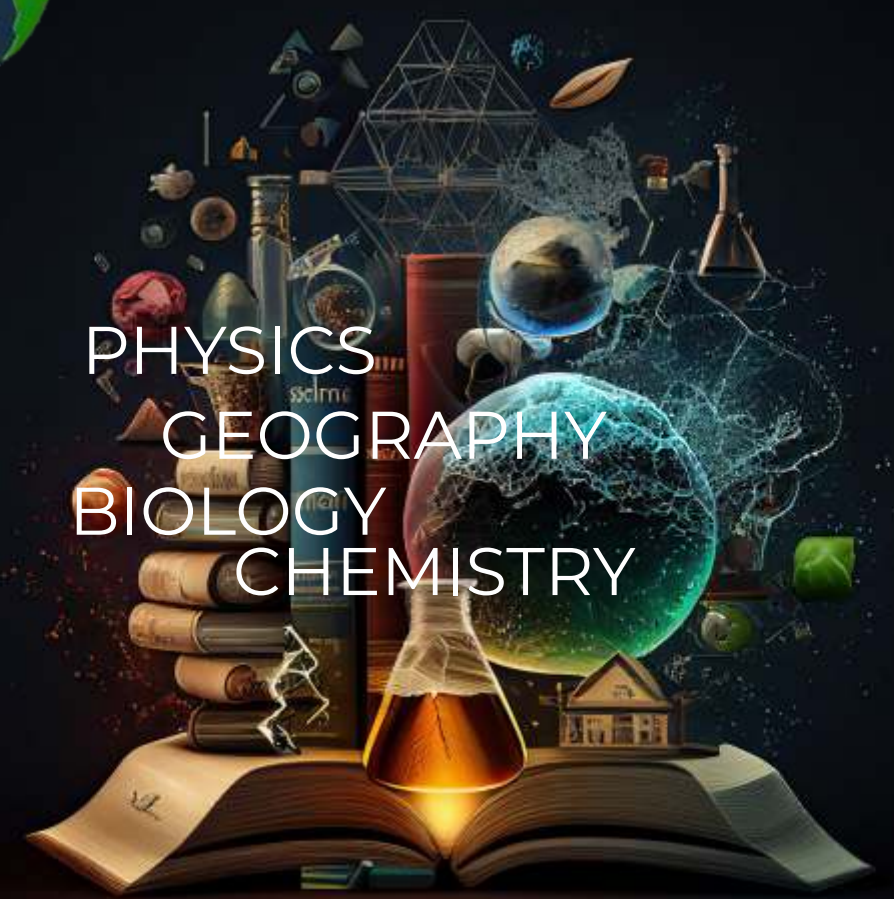
Take your learning to the next dimension with our 3D Image Insert feature. This innovative capability allows students to insert 3D images, providing a hands-on approach to demonstrating topics. With the help of gestural recognition controllers, students can interact with and explore these 3D visuals, tapping into their 7th sense of imagination and creativity for a deeper and more engaging educational journey.



EMPOWERING THE 7TH SENSE WITH VISUAL LEARNING

Immerse yourself in a world of enriched learning with our user-friendly interface. Written in clear and accessible language, and complemented by engaging graphics, this feature goes beyond the ordinary. It enables students to effortlessly draw shapes, solve complex graph functions, equations, and formulae, and even embarks on stimulating **Physics, Biology, Geography, and Chemistry** lab experiments. This practical and immersive approach enhances students' practical learning experiences, stimulating their 7th sense of curiosity and innovation for a more profound understanding of academic concepts.

PHYSICS
GEOGRAPHY
BIOLOGY
CHEMISTRY



NEED ALL ICONS

Write the text in multiple colors with the help of this Dual-color pen. Small nip and large nip of the pen can be used to write the text in different colours. While erase/rewrite , which is at the back of the pen, allows you to erase anytime you want. And you can do it in the most natural way.

DUAL PEN

DICTATION FROM FILE

The panel reads out text from Word or PDF files in any Indian languages creating fun and interactive environment.

Split the Canvas to open additional application like MS Word, Excel, etc.simultaneously.

SPLITTER

DRAGGING THE IMAGE/TEXT

Get direct access to any online educational content like images, text or videos by direct dragging to the canvas.

The canvas content extends beyond the boundaries by connecting to two or more panels at the same time.

EXTENDED CANVAS

VIDEO ANNOTATION

Annotate on video with ease. Stills can be extracted from video. Annotate on different timelines on the video & replay.

A menu in the bottom of the panel proved to be very helpful to user to navigate easily.

EASY MENU

WIRELESS INSERTION OF FILES

By scanning a QR code on screen one can easily insert ppt, pdf and jpeg file into sense board software.

OUR DIFFERENTIATORS

EASI TALK:



EASI TALK is a powerful tool that empowers school administrators to deliver crucial announcements to the entire school or specific classes, utilizing both audio and video modes. Moreover, it enables administrators to send text messages that are read aloud, facilitating seamless information sharing. With the added capability to share desktop screens, this feature ensures smooth transitions during video communication. This tool nurtures students' 7th sense by providing them with clear and accessible information, fostering a heightened sense of awareness and engagement.

Monitoring for Effective Learning
SENSES WATCH offers administrators a centralized hub to effortlessly monitor all classrooms, guaranteeing an environment conducive to effective learning and adherence to discipline. This tool displays webcam outputs from connected classrooms on the panel screen. Administrators can also address specific classes through audio communication. By ensuring a well-structured learning environment, SENSES WATCH promotes students' 7th sense development, encouraging them to actively participate and engage in their education.

SENSES WATCH:



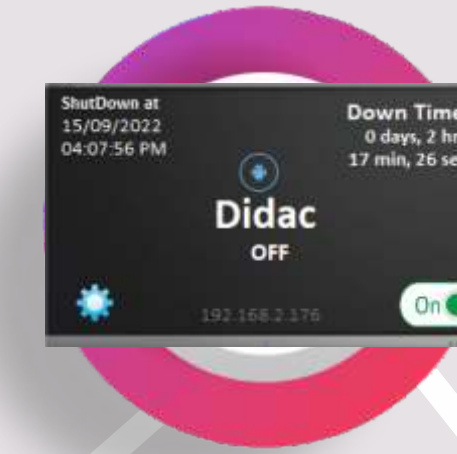
SENSES CONNECT: COLLABORATIVE LEARNING

SENSES CONNECT encourages collaborative learning, allowing multiple users to share, mirror, and compare their presentations. Students can effortlessly mirror their laptop and mobile screens on the Senses IIP, facilitating dynamic interactions. With the ability to cast panel teaching content to students' devices in real-time, SENSES CONNECT enhances students' 7th sense by promoting active participation and collaboration, fostering a deeper understanding of the subject matter.



SENSE MANAGE:

Effortless Panel Control
SENSE MANAGE grants administrators the power to remotely control all panels in any classroom, providing unparalleled convenience and efficiency. Additionally, administrators gain access to centralized statistical insights regarding the usage of each panel. This feature not only streamlines classroom management but also nurtures the 7th sense in students by ensuring that learning resources are readily available and optimized for their educational journey.



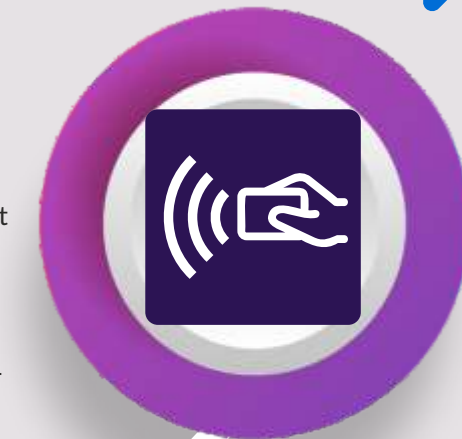
SENSE CAPTURE:

High-Quality Lecture Recording
SENSE CAPTURE is an invaluable tool that empowers educators to record lectures in stunning 4k resolution, all without the need for external cameras. Leveraging a high compression algorithm, it creates top-notch lecture recordings without consuming excessive hard disk space. Furthermore, it facilitates seamless sharing of recorded lectures, serving as a valuable resource that students can access at their convenience. This feature enhances students' 7th sense by offering a library of high-quality study materials that can be accessed whenever needed, promoting self-directed learning and exploration.



SENSE ATTENDANCE:

Streamlined Attendance Management
SENSE ATTENDANCE revolutionizes attendance management, benefiting students in numerous ways. With a comprehensive student attendance management system integrated into the panel, students can effortlessly record their attendance by simply flashing their NFC-enabled cards on the panel. This system ensures a seamless and efficient way of tracking in-and-out times. Furthermore, students can access various types of attendance reports directly on the panel or remotely through a central server. This feature fosters students' 7th sense by promoting punctuality and accountability, ensuring that they are actively engaged in their learning journey.



NFC AUTHENTICATION:

Secure and Convenient Access
NFC AUTHENTICATION takes panel security to the next level, offering both security and convenience for students. They can utilize NFC-enabled cards or mobile devices to lock and unlock the panel effortlessly. Additionally, these NFC-enabled cards can be used to log teachers' usage, ensuring a secure and organized learning environment. By prioritizing security and accessibility, this feature supports students' 7th sense development by fostering a safe and conducive atmosphere for learning and exploration.





SENSES AND THE SUPPORT SYSTEM:

DEDICATED SERVICE AND SUPPORT

At the heart of our commitment lies a dedication to exceptional service support. We take pride in promptly addressing any client concerns and resolving issues within stipulated timeframes. Our sales efforts are bolstered by a robust service and support network, spanning across India, ensuring that our valued customers receive the best care possible. With a vision to stand as the foremost brand in the country, we firmly believe that prioritizing service support is paramount. We assure you that the products and services we provide will be cherished by you for years to come, and you can always count on us to fulfil your solution needs.



Nurturing the 7th Sense through Training and Innovation

UNLIMITED SOFTWARE UPDATES



We believe in staying ahead of the educational curve, and that's why we offer unlimited software updates that extend the life of your solutions. These updates are provided at no additional cost and are aligned with the evolving needs of educators. We release new updates on a quarterly basis, ensuring that our offerings remain at the forefront of educational technology, nurturing your 7th sense of adaptability and progress.

SENSES TRAINING SUPPORT



Senses is committed to empowering school teachers, enabling them to tap into their 7th sense of pedagogical innovation. We offer unlimited, complimentary training sessions spanning up to 3 years. Our approach is rooted in innovation, tailored to your unique needs. Our dedicated team stays in constant communication with our clients, ensuring that training is tailored to subjects and the specific requirements of teachers, students, and educational institutions. Our goal is to provide comprehensive training support that fosters excellence in education.

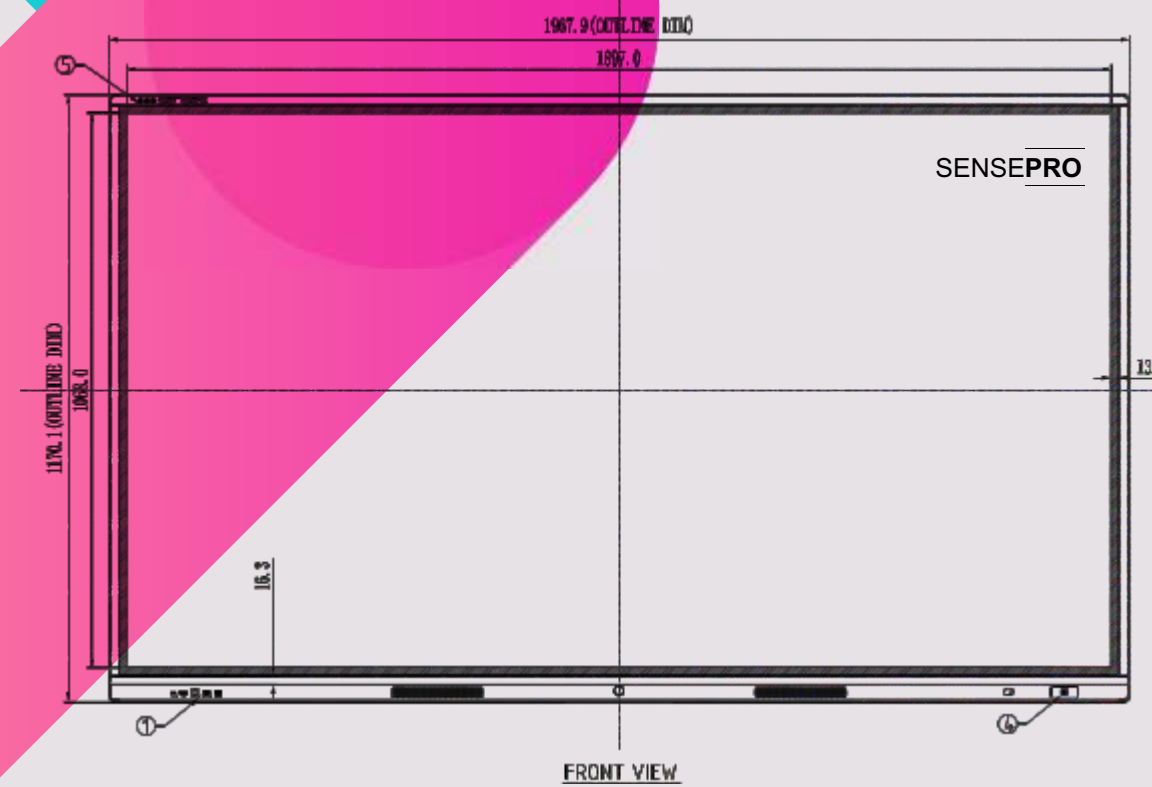
SENSES INNOVATION



Our commitment to innovation is unwavering. With every training session, we listen to the feedback of educators and respond proactively. Your insights drive our research and development, leading to continuous improvements and upgrades in our solutions. This iterative process ensures that we are always at the cutting edge of educational technology, supporting your journey to cultivate the 7th sense of innovation in teaching and learning.

NEED LATEST

SENSEPRO



PANEL DIMENSIONS		
	Length	Height
65"	4'7"	2'6"
75"	5'6"	3'4"
86"	6'5"	3'8"
98"	7'1"	4'4"

HARDWARE SPECIFICATIONS

	65IV2000	75IV1000	86IV1000
Screen Type	LED with super bright backlit display Commercial Grade	LED with super bright backlit display Commercial Grade	LED with super bright backlit display Commercial Grade
Backlight Type	DLED	DLED	DLED
Glass bonding	ZERO bonding Technology	ZERO bonding Technology	ZERO bonding Technology
Resolution	3840X2160, 4K	3840X2160, 4K	3840X2160, 4K
Number of Colors	1.07B (10-bit)	1.07B (10-bit)	1.07B (10-bit)
Refreshing frequency	120 Hz	120 Hz	120 Hz
Response Time	< 4ms	< 4ms	< 4ms
Contrast ratio	18000:1	35000:1	36000:1
Brightness	450 cd/m2	550 cd/m2	600 cd/m2
Viewing Angle	178/178	178/178	178/178
Life	50,000 hrs	50,000 hrs	50,000 hrs
Audio Amplifier	In-built, BOSE amplifier 2.1 channel output		
Audio Speaker	2 X 20W and 20W sub-woofer		
Sensing Type	Infrared 20 points, writing and 40 point, touch		
Touch Response Time	<4ms (typ)	<4ms (typ)	<4ms (typ)
Touch Accuracy	0.3 mm	0.3 mm	0.3 mm
Surface Protection	Toughened glass Level 7 MOHS Std.		
Android Module*	Android 11.0, Dual core A73 +Dual Core A73, 4GB RAM, 64GB Flash, Wifi 2.4Ghz and 5.0Ghz, Bluetooth 5.2		
Windows Module	Windows 11, Intel H510 Comet Lake, i5/i7 11th generation, 128GB SSD, 8GB expandable upto 32GB, 1TB expandable upto 6TB, UHD 630, WiFi 6, BT 5.2		
Inbuilt WiFi Access point	2.4GHz/5GHz, 802.11a/b/g/n/ac		
Inbuilt NFC authentication	ISO/IEC 14443 A / ISO/IEC 14443 B, MIFARE FeliCa, Read Write Speed - 106 To 424kbps		
Bluetooth	2.1+EDR/4.2/5.0	2.1+EDR/4.2/5.0	2.1+EDR/4.2/5.0
Connectivity	LAN RJ45, USB 2.0/3.0/3.1 Type C, Mini Display Port, Mic and earphone port, VGA Input, HDMI 1080p Input, HDMI 4K2K, SPDIF optical out		
Power Requirement	100V-240V AC 50/60HZ	100V-240V AC 50/60HZ	100V-240V AC 50/60HZ
Power Consumption	<340W	<600W	<700W
Operating Temperature	`minus 10 to 55 degree	`minus 10 to 55 degree	`minus 10 to 55 degree
operational humidity	10% to 90 %	10% to 90 %	10% to 90 %
Dimensions L*H*W	1430X804X86mm	1722X1032X87mm	1968X1170X87mm
Net Weight	45 kg	52 kg	60 kg



**A DECADE OF DEDICATION
TOWARDS EDUCATION**

BUILDING STRONGER FOUNDATION

BY CREATING IMPACTFUL LEARNING

"Senses intelligent Interactive Panel is no less than a blessing for teachers and students in today's world. It is to enhance classroom interactivity and teaching learning process and it makes teaching seamless and simplistic with its cutting edge features from student, teachers and parents' perspective."

**INDIA'S NO. 1 RANKED
INTERACTIVE EDUCATION PANEL**



CORPORATE OFFICE

Senses Electronics Pvt. Ltd.
M No. 818, At Post Bhugaon,
Tal. Mulshi, Pune 412108.
Maharashtra, India



FOR SALES ENQUIRIES

Phone: +91 7066840505
Email: sales@senseselec.com



SUPPORT & TRAINING

TOLL FREE NO:
1800 120 566 566
Email: care@senseselec.com
www.senseselec.com

FOLLOW US



TECHNOLOGY PARTNER



SCAN FOR KNOW MORE



DISCLAIMER: The information in this brochure is provided as is and without any warranties of any kind, whether expressed or implied, including but not limited to, implied warranties of satisfactory quality, fitness for a particular purpose and/or correctness. The contents of this brochure are for general information purposes only and do not constitute advice. Senses Electronics Pvt. Ltd does not represent or warrant that the information and/or specifications contained in this brochure are accurate, complete, or current and specifically stipulates that certain interactive panel details and specifications contained in this brochure may differ in available models. Therefore, Senses Electronics Pvt. Ltd makes no warranties or representations regarding the use of the content, details, specifications, or information contained in this brochure in terms of their correctness, accuracy, adequacy, usefulness, timeliness, reliability, or otherwise, in each case to the fullest extent permitted by law.